

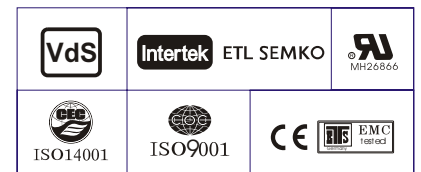
Specification

Nominal Voltage	12V	
Watts(15min Rate)	230.4 Watts at 1.67V/cell	
Dimension	Length	348±3mm (13.70 inches)
	Width	167±2mm (6.57 inches)
	Container Height	178±2mm (7.01 inches)
	Total Height (with Terminal)	178±2mm (7.01 inches)
Approx Weight	Approx 21.0 kg (46.3lbs)	
Terminal	T6	
Container Material	ABS	
Rated Capacity	67.4 AH/6.74A	(10hr, 1.80V/cell, 25°C/77°F)
	65.0 AH/8.125A	(8hr, 1.80V/cell, 25°C/77°F)
	55.0 AH/11.0A	(5hr, 1.75V/cell, 25°C/77°F)
	49.5 AH/16.5A	(3hr, 1.75V/cell, 25°C/77°F)
	45.2 AH/45.2A	(1hr, 1.60V/cell, 25°C/77°F)
Max. Discharge Current	780A (5s)	
Internal Resistance	Approx 7.3mΩ	
Operating Temp. Range	Discharge	-15~50°C (5~122°F)
	Charge	0~40°C (32~104°F)
	Storage	-15~40°C (5~104°F)
Nominal Operating Temp. Range	25±3°C (77±5°F)	
Cycle Use	Initial Charging Current less than 19.5A. Voltage	
	14.4V~15.0V at 25°C(77°F)Temp. Coefficient -30mV/°C	
Standby Use	No limit on Initial Charging Current Voltage	
	13.5V~13.8V at 25°C(77°F)Temp. Coefficient -20mV/°C	
Capacity affected by Temperature	40°C (104°F)	103%
	25°C (77°F)	100%
	0°C (32°F)	86%
Self Discharge	Leoch LPX series batteries may be stored for up to 6 months at 25°C(77°F) and then a freshening charge is required. For higher temperatures the time interval will be shorter.	



Applications

- ◆ UPS (High rate)
- ◆ High power backup supply
- ◆ Emergency power supply
- ◆ Starting system
- ◆ Power tools
- ◆ Emergency lighting
- ◆ Electric starting



Constant Current Discharge (Amperes) at 25 °C (77°F)

F.V/Time	5min	10min	15min	20min	30min	45min	1h	2h	3h	4h	5h	6h	8h	10h	20h
1.85V/cell	139.5	106.6	90.7	75.2	57.3	45.0	36.7	21.7	15.5	12.4	10.5	9.09	7.66	6.36	3.43
1.80V/cell	178.4	129.8	104.4	84.7	64.4	49.9	39.1	22.6	16.2	12.9	10.7	9.48	8.13	6.74	3.54
1.75V/cell	201.2	142.6	114.1	91.1	66.8	51.7	40.9	23.4	16.5	13.2	11.0	9.70	8.27	6.80	3.57
1.70V/cell	221.5	155.5	121.7	95.7	69.6	53.7	42.2	24.3	17.0	13.5	11.3	9.89	8.38	6.87	3.63
1.67V/cell	244.3	167.8	129.5	101.8	73.4	55.1	43.7	25.0	17.8	14.0	11.5	10.2	8.52	7.02	3.68
1.60V/cell	269.6	182.2	138.5	108.3	77.5	57.4	45.2	25.9	18.2	14.5	11.9	10.4	8.60	7.09	3.70

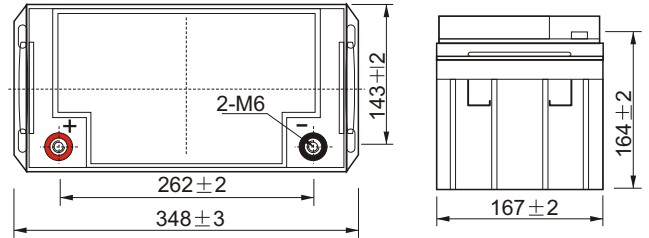
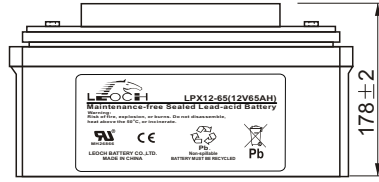
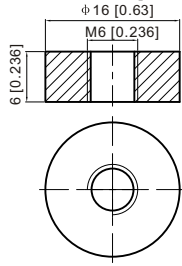
Constant Power Discharge (Watts) at 25 °C (77°F)

F.V/Time	5min	10min	15min	20min	30min	45min	1h	2h	3h	4h	5h	6h	8h	10h	20h
1.85V/cell	255.0	196.9	169.3	141.7	109.2	86.4	70.7	42.2	30.5	24.5	20.8	18.2	15.0	12.6	6.81
1.80V/cell	322.6	236.9	192.2	157.2	120.9	95.1	75.0	43.6	31.6	25.3	21.1	18.9	15.9	13.3	7.02
1.75V/cell	356.1	256.1	207.4	167.5	124.5	97.7	78.1	45.0	32.0	25.7	21.6	19.3	16.1	13.4	7.08
1.70V/cell	381.4	272.9	218.3	174.8	128.8	101.3	80.3	46.7	32.9	26.4	22.1	19.7	16.3	13.6	7.20
1.67V/cell	414.7	291.9	230.4	184.3	134.8	102.8	82.5	47.7	34.1	27.2	22.7	20.1	16.5	13.8	7.28
1.60V/cell	446.9	309.7	242.3	194.2	141.3	106.6	84.9	49.1	35.0	27.9	23.4	20.5	16.7	14.0	7.31

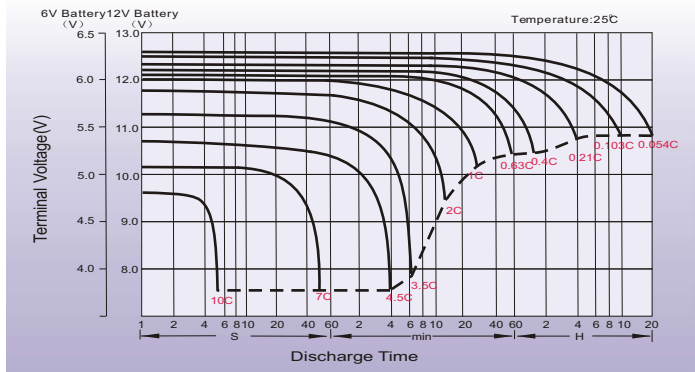
Dimensions

T6 Terminal

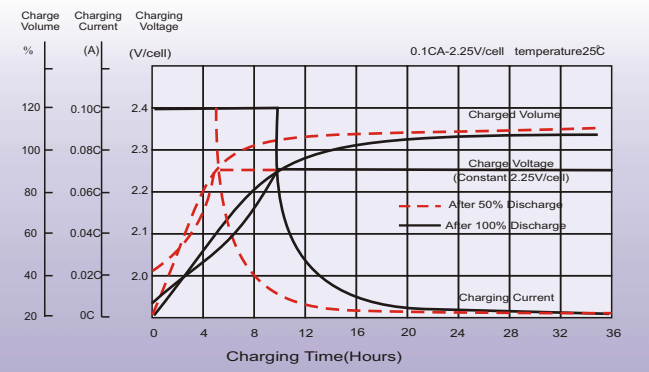
Unit: mm [inches]



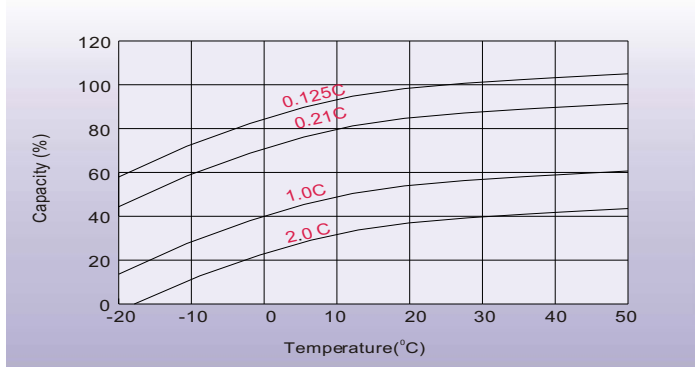
Discharge Characteristics



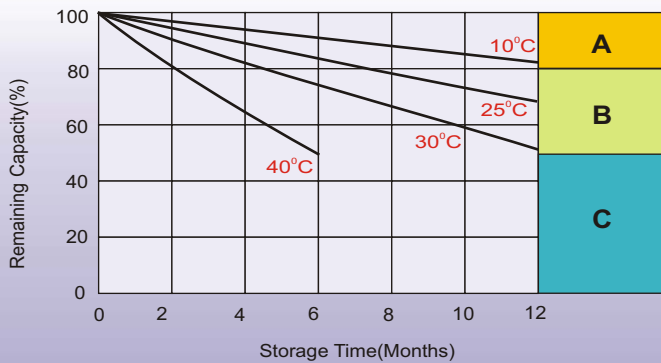
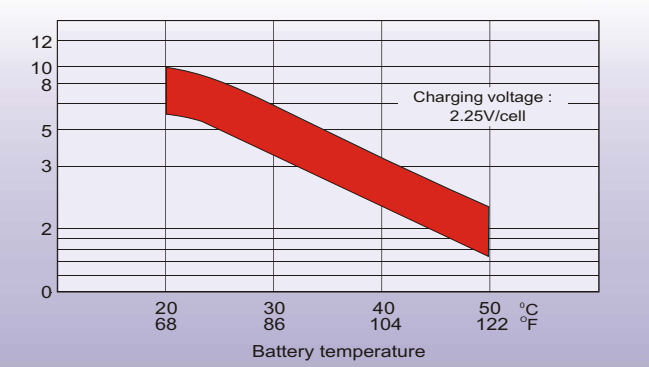
Float Charging Characteristics



Temperature Effects in Relation to Battery Capacity



Effect of Temperature on Long Term Float Life



Self Discharge Characteristics

- A** No supplementary charge required
(Carry out supplementary charge before use if 100% capacity is required.)
- B** Supplementary charge required before use. Optional charging way as below:
 1. Charged for above 3 days at limited current 0.25CA and constant voltage 2.25V/cell.
 2. Charged for above 20 hours at limited current 0.25CA and constant voltage 2.45V/cell.
 3. Charged for 8-10 hours at limited current 0.05CA.
- C** Supplementary charge may often fail to recover the capacity.
The battery should never be left standing till this is reached.

Sales Office

China sales office:

Add: 5th Floor, Xinbaohui Bldg., Nanhai Blvd.,
Nanshan, Shenzhen, China. 518052
Tel: +86-755-86036060 (100 lines)
Fax: +86-755-26067269
E-mail: export@leoch.com
Http://www.leoch.com

North America sales office:

Add: 19751 Descartes, Unit A,
Foothill Ranch, CA 92610, USA
Tel: 949-588-5853
Fax: 949-588-5966
E-mail: sales@leoch.us
Http://www.leoch.us

Europe sales office:

Add: 9B Wheatstone Park, Waterwells
Business Park, Gloucester, GL2 2AQ. UK.
Tel: +44(0) 1452 729428
Fax: +44 (0)1452-690125
E-mail: Sales.Europe@leoch.com