

Specification

| | | |
|----------------------------------|---|-------------------------------|
| Nominal Voltage | 12V | |
| Watts(15min Rate) | 356.1 Watts at 1.67V/cell | |
| Dimension | Length | 330 ± 3mm (12.99 inches) |
| | Width | 173 ± 2mm (6.81 inches) |
| | Container Height | 212 ± 2mm (8.35 inches) |
| | Total Height (with Terminal) | 220 ± 2mm (8.66 inches) |
| Approx Weight | Approx 30.0 kg (66.2lbs) | |
| Terminal | T11 | |
| Container Material | ABS | |
| Rated Capacity | 104.0 AH/10.4A | (10hr, 1.80V/cell, 25°C/77°F) |
| | 100.0 AH/12.5A | (8hr, 1.80V/cell, 25°C/77°F) |
| | 89.0 AH/17.8A | (5hr, 1.75V/cell, 25°C/77°F) |
| | 81.6 AH/27.2A | (3hr, 1.75V/cell, 25°C/77°F) |
| | 78.0 AH/78.0A | (1hr, 1.60V/cell, 25°C/77°F) |
| Max. Discharge Current | 1200A (5s) | |
| Internal Resistance | Approx 4.9mΩ | |
| Operating Temp. Range | Discharge | -15 ~ 50°C (5 ~ 122°F) |
| | Charge | 0 ~ 40°C (32 ~ 104°F) |
| | Storage | -15 ~ 40°C (5 ~ 104°F) |
| Nominal Operating Temp. Range | 25 ± 3°C (77 ± 5°F) | |
| Cycle Use | Initial Charging Current less than 30.0A. Voltage | |
| | 14.4V ~ 15.0V at 25°C (77°F) Temp. Coefficient -30mV/°C | |
| Standby Use | No limit on Initial Charging Current Voltage | |
| | 13.5V ~ 13.8V at 25°C (77°F) Temp. Coefficient -20mV/°C | |
| Capacity affected by Temperature | 40°C (104°F) | 103% |
| | 25°C (77°F) | 100% |
| | 0°C (32°F) | 86% |
| Self Discharge | Leoch LPX series batteries may be stored for up to 6 months at 25°C (77°F) and then a freshening charge is required. For higher temperatures the time interval will be shorter. | |



Applications

- ◆ UPS (High rate)
- ◆ High power backup supply
- ◆ Emergency power supply
- ◆ Starting system
- ◆ Power tools
- ◆ Emergency lighting
- ◆ Electric starting



Constant Current Discharge (Amperes) at 25 °C (77°F)

| F.V/Time | 5min | 10min | 15min | 20min | 30min | 45min | 1h | 2h | 3h | 4h | 5h | 6h | 8h | 10h | 20h |
|------------|-------|-------|-------|-------|-------|-------|------|------|------|------|------|------|------|------|------|
| 1.85V/cell | 185.8 | 149.7 | 137.5 | 120.5 | 97.7 | 76.0 | 62.1 | 35.1 | 25.6 | 20.3 | 17.3 | 14.7 | 12.0 | 10.0 | 5.33 |
| 1.80V/cell | 244.5 | 185.7 | 161.3 | 138.2 | 111.9 | 85.7 | 67.5 | 37.6 | 26.7 | 21.0 | 17.4 | 15.1 | 12.5 | 10.4 | 5.42 |
| 1.75V/cell | 275.7 | 204.0 | 176.2 | 148.7 | 116.2 | 89.0 | 70.6 | 39.0 | 27.2 | 21.4 | 17.8 | 15.6 | 12.7 | 10.5 | 5.47 |
| 1.70V/cell | 303.6 | 222.3 | 188.2 | 156.4 | 119.9 | 91.7 | 72.8 | 40.4 | 27.9 | 22.0 | 18.2 | 15.9 | 12.9 | 10.6 | 5.57 |
| 1.67V/cell | 334.8 | 240.0 | 200.1 | 166.1 | 125.7 | 94.6 | 75.5 | 41.6 | 29.2 | 22.8 | 18.7 | 16.3 | 13.2 | 10.8 | 5.64 |
| 1.60V/cell | 369.4 | 260.5 | 214.1 | 176.9 | 131.2 | 98.9 | 78.0 | 43.1 | 30.1 | 23.5 | 19.4 | 16.6 | 13.3 | 10.9 | 5.67 |

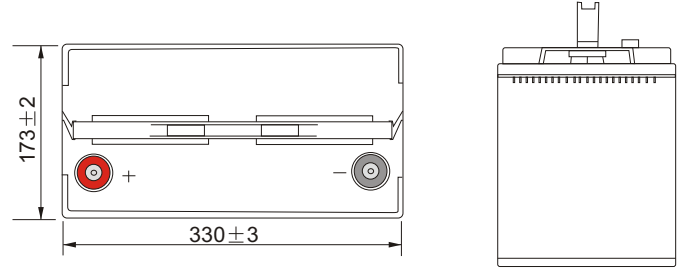
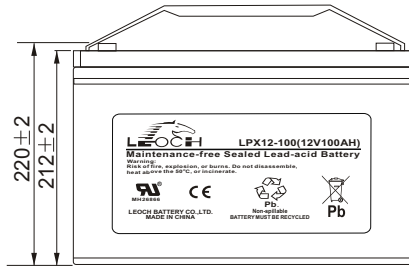
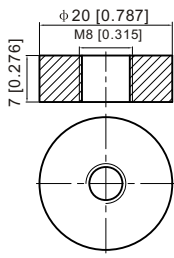
Constant Power Discharge (Watts) at 25 °C (77°F)

| F.V/Time | 5min | 10min | 15min | 20min | 30min | 45min | 1h | 2h | 3h | 4h | 5h | 6h | 8h | 10h | 20h |
|------------|-------|-------|-------|-------|-------|-------|-------|------|------|------|------|------|------|------|------|
| 1.85V/cell | 339.7 | 276.4 | 256.7 | 227.1 | 186.2 | 146.0 | 119.7 | 68.2 | 50.1 | 40.0 | 34.3 | 29.4 | 23.6 | 19.7 | 10.6 |
| 1.80V/cell | 442.3 | 338.9 | 297.0 | 256.8 | 210.0 | 163.5 | 129.4 | 72.5 | 52.1 | 41.2 | 34.3 | 30.2 | 24.4 | 20.5 | 10.8 |
| 1.75V/cell | 488.1 | 366.4 | 320.5 | 273.6 | 216.3 | 168.1 | 134.8 | 74.9 | 52.9 | 42.0 | 35.1 | 30.9 | 24.7 | 20.7 | 10.9 |
| 1.70V/cell | 522.6 | 390.3 | 337.5 | 285.4 | 222.0 | 172.5 | 138.6 | 77.2 | 54.2 | 43.1 | 36.0 | 31.5 | 25.1 | 20.9 | 11.1 |
| 1.67V/cell | 568.2 | 417.5 | 356.1 | 301.0 | 230.9 | 176.4 | 142.6 | 79.4 | 56.3 | 44.3 | 36.9 | 32.1 | 25.5 | 21.2 | 11.2 |
| 1.60V/cell | 612.4 | 442.9 | 374.5 | 317.1 | 239.2 | 183.4 | 146.5 | 81.7 | 57.7 | 45.6 | 37.9 | 32.7 | 25.7 | 21.4 | 11.3 |

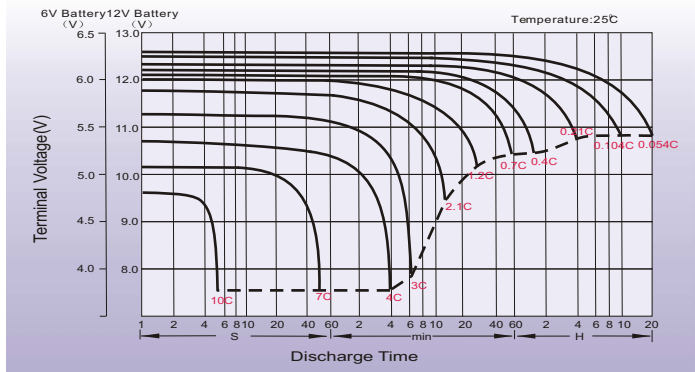
Dimensions

T11 Terminal

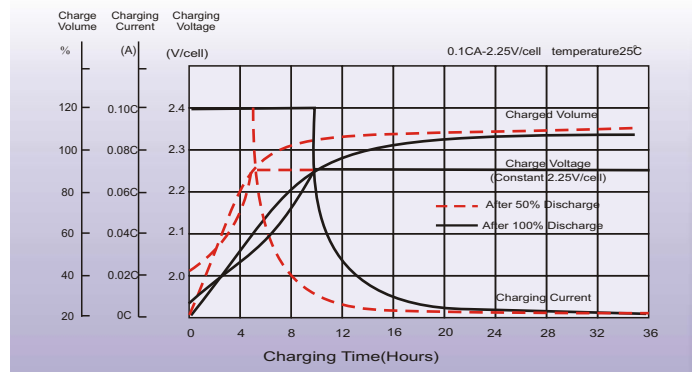
Unit: mm [inches]



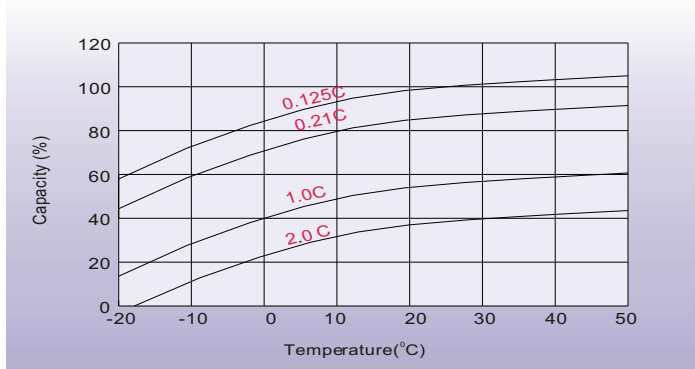
Discharge Characteristics



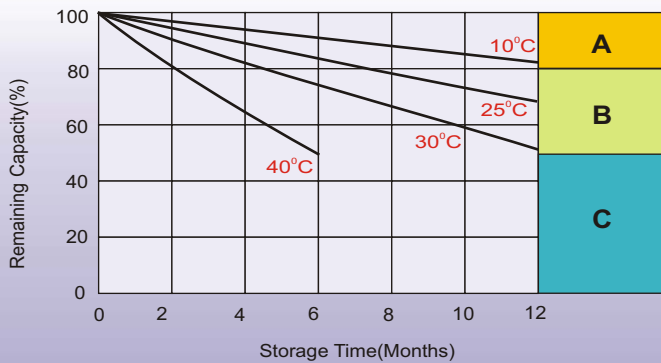
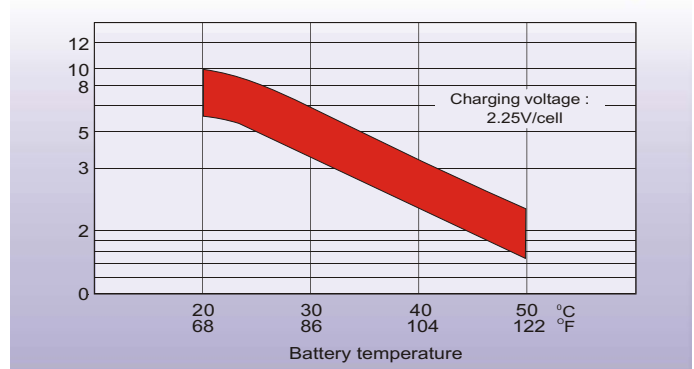
Float Charging Characteristics



Temperature Effects in Relation to Battery Capacity



Effect of Temperature on Long Term Float Life



Self Discharge Characteristics

- A** No supplementary charge required
(Carry out supplementary charge before use if 100% capacity is required.)
- B** Supplementary charge required before use. Optional charging way as below:
 1. Charged for above 3 days at limited current 0.25CA and constant voltage 2.25V/cell.
 2. Charged for above 20 hours at limited current 0.25CA and constant voltage 2.45V/cell.
 3. Charged for 8-10 hours at limited current 0.05CA.
- C** Supplementary charge may often fail to recover the capacity.
The battery should never be left standing till this is reached.

Sales Office

China sales office:

Add: 5th Floor, Xinbaohui Bldg., Nanhai Blvd.,
Nanshan, Shenzhen, China. 518052
Tel: +86-755-86036060 (100 lines)
Fax: +86-755-26067269
E-mail: export@leoch.com
Http://www.leoch.com

North America sales office:

Add: 19751 Descartes, Unit A,
Foothill Ranch, CA 92610, USA
Tel: 949-588-5853
Fax: 949-588-5966
E-mail: sales@leoch.us
Http://www.leoch.us

Europe sales office:

Add: 9B Wheatstone Park, Waterwells
Business Park, Gloucester, GL2 2AQ. UK.
Tel: +44(0) 1452 729428
Fax: +44 (0)1452-690125
E-mail: Sales.Europe@leoch.com